

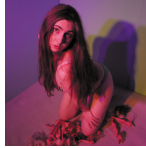
fringe

PRESS RELEASE

bambule.babys
(Germany)

Baby Paradise: Part One

by **Anna Valeska Pohl**



Barbie gets her #MeToo moment at This Year's Edinburgh Festival Fringe

In the immersive performance installation, **Baby Paradise**, nothing is safe or pretty. In the two serial parts an audience of 20 people is invited to experience and interact with a bizarre underworld of desire and oppression. A surreal peep show begins: Baby Paradise is a prostitute specialising in interacting with Barbie dolls. Every person in the audience becomes a customer. Over the course of two hours, Baby performs a grotesque revue of various female roles and stereotypes – until she becomes a doll herself.

'What occurs is mythic reality,' says writer-director and performer **Anna Valeska Pohl** about the show 'Barbarity has been a part of human sexuality since Hades abducted Persephone to the underworld.' Power, sex, control – what she talks about with **Baby Paradise**, Pohl has experienced herself. The inspiration for this piece came from her personal relationship with a sex worker, after which she founded **bambule.babys** and started to make provocative feminist work.

In March 2018 one of **bambule.babys'** performances was censored by the Regensburg Department of Culture, and Pohl was heavily attacked in the local press and by several institutions, including the Catholic Church. Although the censored performance, *My home is not my home*, was presented at International Performance Crossings in Prague, Pohl still became a persona non grata in her own community. Members of the Regensburg cultural establishment have called Pohl's work 'pornographic' and 'blasphemous' whereas the New York director **John Gould** Rubin considers Pohl a 'ruthless, deeply creative and utterly unique artist who works with a concentrated focus to excavate the hidden compulsions of human behaviour'.

Pohl's work has been inspired by her study of philosophy and Greek philology. **Baby Paradise** was partly created in 2015, when Pohl was training in a Master class for self-generated theatre at Stella Adler Studio of Acting in New York, and then further developed in 2016 when she was an artist-in-residence in Virginia.

www.bambule-babys.de

www.anna-valeska-pohl.de

de-de.facebook.com/bambule.babys

instagram.com/bambule.babys

instagram.com/the_baby_paradise

youtube.com/watch?v=On2rIWNOB-Y

Listings Information

Venue C royale, Royal Society of Edinburgh, 22 George Street, EH2 2PQ, venue 6
Dates 1-27 Aug
Time 20:45 (1hr00)
Ticket prices £8.50-£10.50 / concessions £6.50-£8.50 / under 18s £4.50-£6.50
C venues box office 0131 581 5555 / www.thefestival.com/2018/baby-paradise-part-one
Fringe box office 0131 226 0000 / www.edfringe.com



For further information, images and interview availability please contact Michael Pöpperl at Bambule Babys on +49 1606185765 / michael@bambule-babys.de or the C venues press office on 0131 581 5550 / press@cvenues.com

C venues
vibrant vivacious variety

general manager
Rosie Wake
artistic director
Hartley T A Kemp

year round administration
C venues London
5 Alexandra Mansions
Chichele Road
London NW2 3AS

during the Fringe in August
C venues Edinburgh
Adam House
Chambers Street
Edinburgh EH1 1HR
Ticket collection at any C venue

press office tel 0131 581 5550
box office tel 0131 581 5555

email press@cvenues.com
www.cvenues.com

C venues